

AVM DB2-CHM1

USER MANUAL

DOORBELL CHIME INSTALLATION

About This Manual

All pictures, images, icons and snapshots in this manual are for reference only. If there is inconsistency between the manual and the actual product, the actual product shall prevail. The manual will be updated according to the product improvement and are subject to change without prior written notice.

Legal Disclaimer

To the maximum extent permitted by applicable law, the product described, with its hardware, software, software and firmware, is provided "as is", with all faults and errors, and our company makes no warranties, express or implied, including particular purpose, and non-infringement of third party. In no event will our company, offices, or agents be liable to you for any special, consequential, incidental, or indirect damages, including, among others, damages for loss of business profits, business interruption, or loss of data or documentation, in connection with the use of this product, even if our company has been advised of the possibility of such damages.

With regard to the product with internet access, the use of product shall be wholly at your own risks. During the use of the device, please strictly abide by applicable law. In the event of any conflicts between this manual and the applicable law, the later prevails.

Installation and Use

Please use our product according to the following safety instructions and warnings.

Do not place the device in extremely hot, cold, dusty or damp location.

If the product does not work properly, please contact your dealer or the nearest service center. Never attempt to disassemble the camera yourself. (We shall not be responsible for any problems caused by unauthorized repair or maintenance.)

Do not drop the device or subject it to physical shock.

Keep away from liquid while in use.

If cleaning is necessary, please use clean cloth to wipe it gently, avoiding water or alcohol.

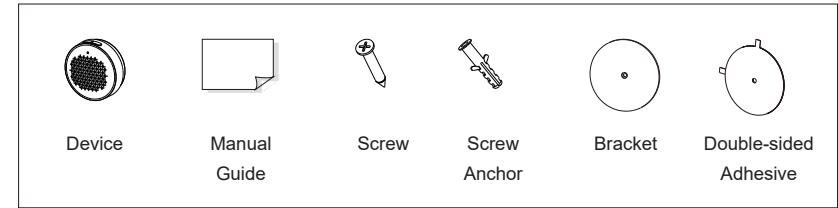
Battery Safety

Please use the recommended batteries.

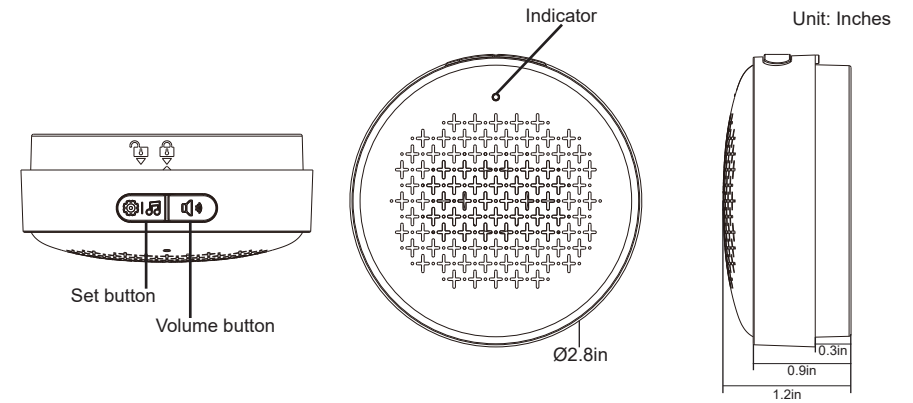
Do not mix old and new batteries, or different manufacturer batteries together.

Properly dispose of your used batteries in accordance with applicable laws and regulations.

1 Package



2 Overview



Description of Indicator

Powering on: the light is on for 3s

Pairing mode: the light flashes.

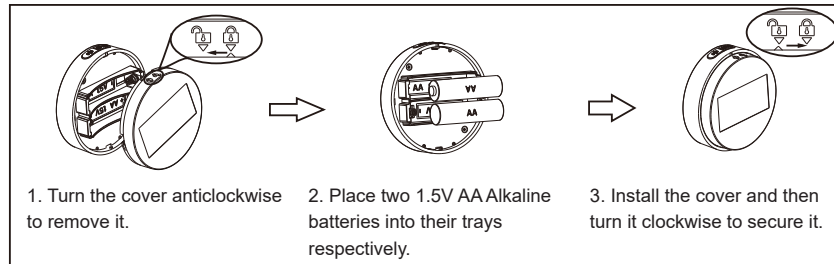
Paired successfully: the light is on for 5s

3 Installation

• Battery Installation

Please use two 1.5V AA Alkaline dry batteries.

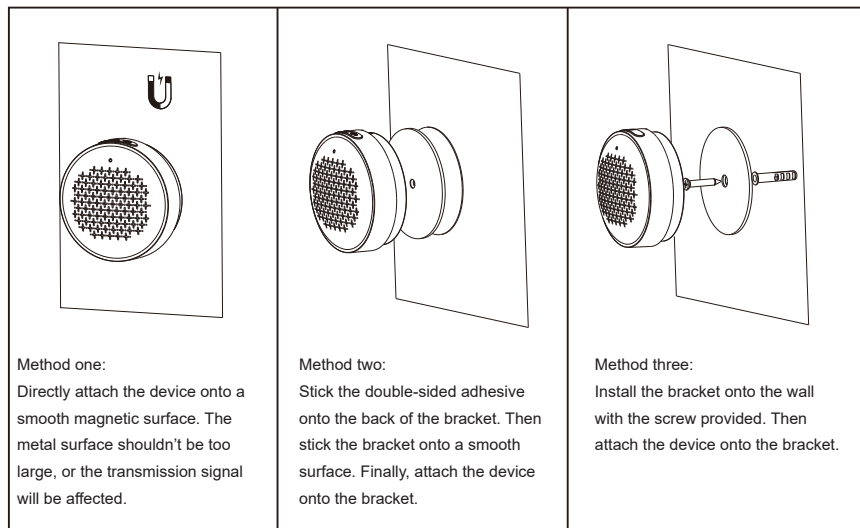
Carbon zinc dry batteries or rechargeable batteries are not recommended.



• Device Installation

The device can be directly placed on the desktop or installed according to the following methods.

Note: The chime should be installed near the doorbell.



4 Function

Doorbell Pairing:

1. Press and hold the Set button for 3s. Then a notification tone is heard and the light flashes. Now, the system enters pairing mode and the previous setting will be reset.
 2. Press and hold the Bell button of the doorbell for 5s. Then the doorbell sends the pairing information.
 3. Once it is paired successfully, a notification tone sounds and the indicator turns on for 5s and then turn off.
- Note:** If it is not paired with a doorbell within 30s, the chime will exit the pairing mode and then wait for next pairing.

Adjusting Volume:

Press the volume button and then you will hear the current ring volume. Then the volume will increase gradually each time you press this button. Please press the volume button to increase or decrease in cycles as needed.

Selecting Ring Tone:

Press the Set button and release it quickly to listen to the current ring tone. Then the ring tone will be switched each time you press this button. Please press the Set button to switch the ring tone in cycles.

Low Battery Reminder:

When the battery is low, the system will remind you. After you hear the warning voice, please replace your batteries in time.

AVYCON[®]



AVYCON[®]

Copyright © AVYCON. All rights reserved. Specifications and pricing are subject to change without notice.

phone: 949-752-7606

email: info@avycon.com

social: [@avycon_aivo](https://www.instagram.com/avycon_aivo)

website: avycon.com